

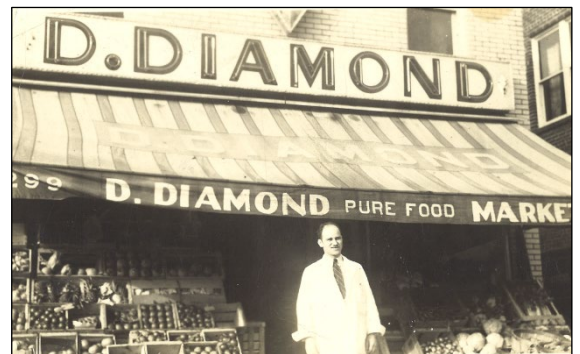
Under construction
Not completed yet

ADELE DIAMOND



- Canada Research Chair Tier I Professor of Developmental Cognitive Neuroscience at the University of British Columbia (UBC), Vancouver, BC
- Elected a Fellow of the Royal Society of Canada and of the American Psychological Association (APA) in 3 separate divisions
- Named one of the “2000 Outstanding Women of the 20th Century”
- Listed as one of the 15 most influential neuroscientists alive today
- Awarded the Urie Bronfenbrenner Award for Lifetime Contributions to Developmental Psychology in the Service of Science and Society from the APA
- Her impact was recently ranked among the top 0.01% of all scientists across all fields
- Co-founded the field of Developmental Cognitive Neuroscience
- Has made discoveries that have improved treatment for 2 different medical disorders and impacted early education, improving millions of children’s lives.

Adele was born in 1952 in New York City to Jerome Diamond (a grocer born in 1903, whose family was the first Jewish family in Monticello, NY, where they were met with signs of “No Jews or Dogs allowed”) and Mildred Golden Diamond (a bookkeeper born in 1916, whose family had started the Golden Pickle Works Co. from her grandfather growing cucumbers and cabbage in Greenlawn, Long Island, and her grandmother selling pickles and sauerkraut on street corners in Brooklyn). Adele was the first in her immediate family to graduate from high school or attend college.



Adele’s mother was born prematurely, suddenly in the doctor office, and weighed only 2 lbs. No hospital in NYC would take her. A terrific nurse had her parents put her in an egg box, put her in the oven to keep her warm, and feed her with an eye dropper.

In 1958, Adele’s family moved from a tenement in a poor neighborhood in the Bronx to a lower-middle class neighborhood in Queens. To avoid the disruption of packing and moving, her parents sent her to a sleep-away camp (Camp Na-Sho-Pa) in the Catskill Mountains. Adele was the youngest in her bunk by 2 years and was picked on all summer. It was traumatizing for her. Her father had taught Adele to read and write before entering school, so her kindergarten and first grade teachers in the Bronx thought she was a genius and wanted her to skip grades. In Queens, they put Adele in the next to the dumbest class, which is exactly where she belonged. That’s the difference in just 1 or 2 years of instruction in a poor neighborhood in the US versus a lower-middle class neighborhood in the US.



Adele continued to attend 8-week sleep-away summer camp for the next 14 years (through most of college.)

In the meantime, while waiting for this page to be finished, you can see some info at Wikipedia at https://en.wikipedia.org/wiki/Adele_Diamond and at the Developmental Cognitive Neuroscience website at <http://www.devcogneuro.com/AdeleDiamond.html>